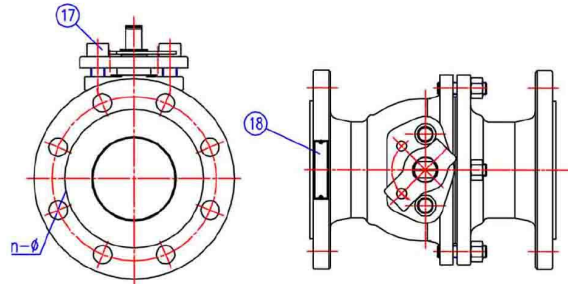
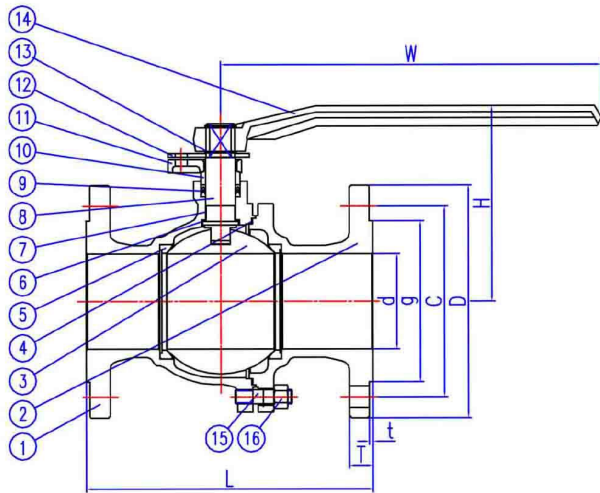


2-PC BODY BALL VALVE FLANGED END JIS 10K

Model : ARV-100FE(J)-2PC



Technical Data

Material

No	PART	MATERIAL
1	BODY	SCS13 / SCS14
2	BONNET	SCS13 / SCS14
3	BALL	A276-304 / A276-316
4	GASKET	PTFE
5	BALL SEATS	RPTFE
6	THRUST WASHER	PTFE
7	STEM BUSHING	PTFE (for 2" above)
8	STEM	A276-304 / A276-316
9	PACKING	PTFE
10	GLAND	A276-304 / A276-316
11	GLAND FLANGE	A351-CF8
12	LOCK PLATE	A276-304
13	RETAINING RING	A276-304
14	HANDLE	QT400-15
15	BONNET BOLT	A193-B8
16	NUT	A194-8
17	HEX. BOLT	A193-B8
18	NAMEPLATE	A276-304

Features :

Pressure - temperature rating : ASME B16.34

Face to Face : JIS B2002

End Flange dimension according to JIS B2220-2004

Inspection and Test : API598

Nominal pressure	10K	
Test Pressure	Shell Test	3.1 Mpa
Applicable Medium	Water, Oil, Gas	
Applicable Temperature	-29 ~ 120 °C	

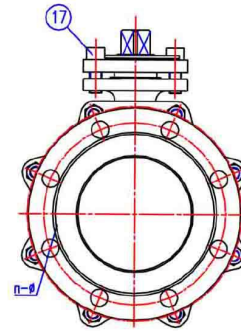
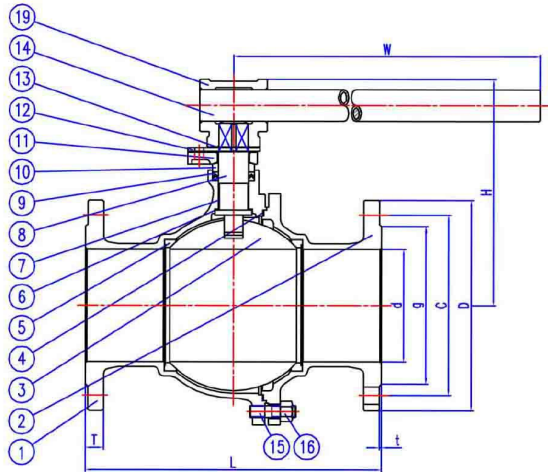
Dimension in mm

SIZE		d	L	D	C	g	T	t	B	H	W	n-Ød	Weight (kg)
DN	in.												
15	1/2"	15	108	95	70	51	12	1	6	73	115	4-Ø15	2
20	3/4"	20	117	100	75	56	14	1	6	77	115	4-Ø15	2.4
25	1"	25	127	125	90	67	14	1	8	94	150	4-Ø19	4
32	1.1/4"	32	140	135	100	76	16	2	8	100	150	4-Ø19	5.3
40	1.1/2"	40	165	140	105	81	16	2	12	116	200	4-Ø19	6.6
50	2"	50	178	155	120	96	16	2	12	124	200	4-Ø19	9
65	2.1/2"	65	190	175	140	116	18	2	16	156	320	4-Ø19	13.6
80	3"	80	203	185	150	126	18	2	16	165	320	8-Ø19	15.5
100	4"	100	229	210	175	151	18	2	20	196	450	8-Ø19	27.35

The contents of this literature are for informative purposes only. Arita is not responsible for suitability or compatibility of these products in relation to system requirement. For specific requirements, consult Arita or its distributors. Arita reserves the right to change or modify product design without prior notice.

2-PC BODY BALL VALVE FLANGED END JIS 10K

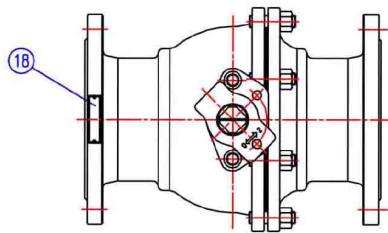
Model : ARV-100FE(J)-2PC



Technical Data

Material

No	PART	MATERIAL
1	BODY	SCS13 / SCS14
2	BONNET	SCS13 / SCS14
3	BALL	A276-304 / A276-316
4	GASKET	PTFE
5	BALL SEATS	RPTFE
6	THRUST WASHER	PTFE
7	STEM BUSHING	PTFE
8	STEM	A276-304 / A276-316
9	PACKING	PTFE
10	GLAND	A276-304 / A276-316
11	GLAND FLANGE	A351-CF8
12	LOCK PLATE	A276-304
13	RETAINING RING	A276-304
14	HANDLE	QT400-15
15	BONNET BOLT	A193-B8
16	NUT	A194-8
17	HEX. BOLT	A193-B8
18	NAMEPLATE	A276-304
19	HANDLE HUB	A216-WCB



Features :

Pressure - temperature rating : ASME B16.34

Face to Face : JIS B2002

End Flange dimension according to JIS B2220-2004

Inspection and Test : API598

Nominal pressure		10K	
Test Pressure	Shell Test	3.1 Mpa	
Applicable Medium	Water, Oil, Gas		
Applicable Temperature	-29 ~ 120 °C		

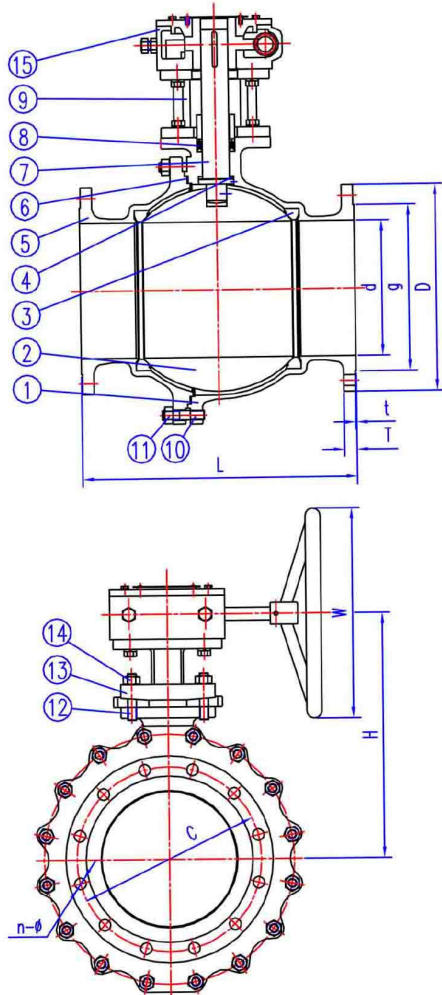
Dimension in mm

SIZE		d	L	D	C	g	T	t	Ø	H	W	n-Ød	Weight (kg)
DN	in.												
125	5"	125	303	250	210	182	20	2	39.5	284	800	8-Ø23	46.2
150	6"	150	345	280	240	212	22	2	39.5	301	800	8-Ø23	57.8
200	8"	200	457	330	290	262	22	2	45	396	940	12-Ø23	98
250	10	250	533	400	355	324	24	2	50	444	940	12-Ø25	145
300	12"	300	610	-	-	-	-	-	-	-	-	16-Ø25	260

The contents of this literature are for informative purposes only. Arita is not responsible for suitability or compatibility of these products in relation to system requirement. For specific requirements, consult Arita or its distributors. Arita reserves the right to change or modify product design without prior notice.

2-PC BODY BALL VALVE FLANGED END JIS 10K

Model : ARV-100FE(J)-2PC



Technical Data

Nominal pressure	10K	
Test Pressure	Shell Test	3.1 Mpa
Applicable Medium	Water, Oil, Gas	
Applicable Temperature	-29 ~ 120 °C	

Material

No	PART	MATERIAL
1	BODY	SCS13A/ SCS14A
2	GASKET	PTFE
3	BONNET	SCS13A/ SCS14A
4	BALL	A276-304/A276-316
5	BALL SEATS	RPTFE
6	THRUST SEAL	PTFE
7	STEM	A276-304/A276-316
8	NAMEPLATE	A276-304
9	PACKING	PTFE
10	YOKE	A216-WCB
11	COUPLING	A276-420
12	WORMGEAR ACTUATOR	C.S.
13	SPRING GASKET	A276-304/A276-316
14	BOLT	A193-B8
15	BOLT	A193-B8
16	SPRING GASKET	A276-304
17	GLAND FLANGE	A351-CF8/A351-CF8M
18	BOLT	A193-B8
19	BOLT	A194-8
20	BONNET BOLT	A193-B8
21	NUT	A194-8

Features :

Pressure - temperature rating : ASME B16.34

Face to Face : JIS B2002

End Flange dimension according to JIS B2220

Inspection and Test : API598

Dimension in mm

SIZE		d	L	D	C	g	T	t	n-Ød	H	Ø	Weight (kg)
DN	in.											
200	8"	203	457	330	290	262	22	2	12-Ø23	400	300	108
250	10"	250	533	400	355	324	24	2	12-Ø25	454	300	172
300	12"	300	610	445	400	368	24	3	16-Ø25	544	300	291

The contents of this literature are for informative purposes only. Arita is not responsible for suitability or compatibility of these products in relation to system requirement. For specific requirements, consult Arita or its distributors. Arita reserves the right to change or modify product design without prior notice.