



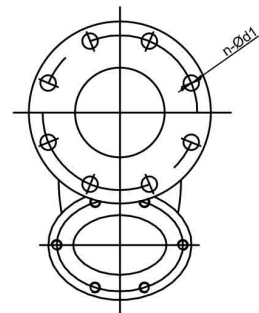
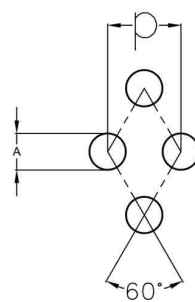
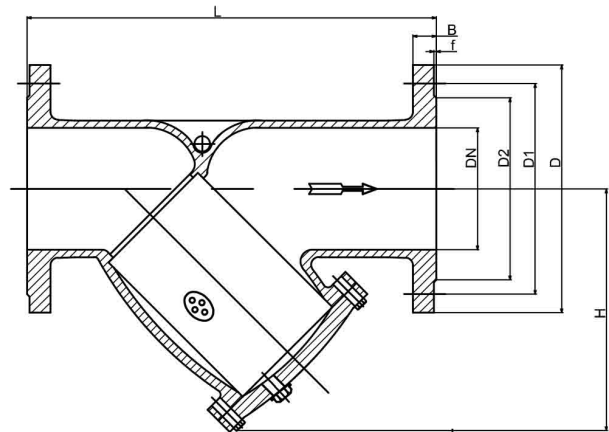
UNIMECH GROUP, MALAYSIA



A MEMBER OF UNIMECH GROUP, MALAYSIA

Y-STRAINER FLANGED END PN16

Model : ARF-705FE(D)



Features :

Face to face : According to EN 1092-2
Flange drilled is according to DIN2501 PN16

Technical Data

Nominal Pressure	PN 16
Applicable Medium	Water, Oil, Steam
Applicable Temperature	≤ 120 °C

Screen Dimension

DN	A	P	screen mesh	thickness
10" & above	Ø3.0	6.0	7 mesh	1.2mm

Material

No	PART	MATERIAL
1	BODY	DUCTILE IRON (FCD450)
2	BONNET	DUCTILE IRON (FCD450)
3	SCREEN	STAINLESS STEEL (304)
4	DRAIN PLUG	CARBON STEEL
5	GASKET	EPDM

Dimension in mm

DN	L±2	D	D1	D2	B	f	H±10	n-Ød1	Drain hole	KG. Approx.
250	730	405	355	323	22	2	425	12-28	3	106
300	850	460	410	378	24.5	2	505	12-28	3	191

The contents of this literature are for informative purposes only. Arita is not responsible for suitability or compatibility of these products in relation to system requirement. For specific requirements, consult Arita or its distributors. Arita reserves the right to change or modify product design without prior notice.