



Cast Iron Marine Valves

TYPE DESIGNATION

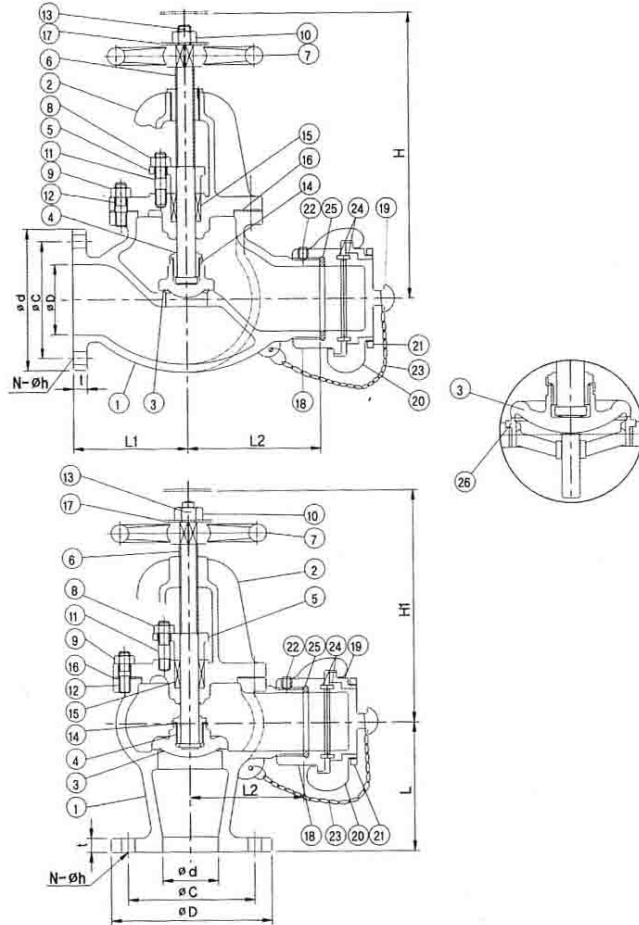
MCI-HGV JIS 5K/10K HOSE GLOBE VALVES

JIS F7333

MCI-HAV JIS 5K/10K HOSE ANGLE VALVES

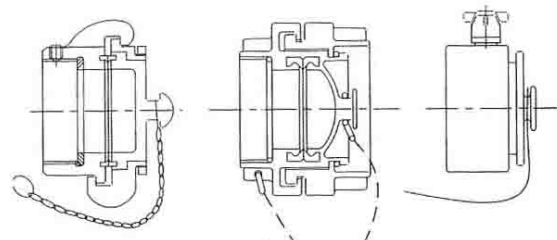
JIS F7333

Bolted Bonnet Integral seat



MATERIALS

NO.	PARTS	MATERIAL
1	BODY	CAST IRON
2	BONNET	CAST IRON
3	DISC	BRONZE
4	DISC NUT	BRONZE/BRASS
5	PACKING GLAND	BRONZE/BRASS
6	STEM	BRASS
7	HANDWHEEL	CAST IRON
8	HEXAGON NUT	STEEL
9	HEXAGON NUT	STEEL
10	HEXAGON NUT	STEEL
11	STUD BOLT	STEEL
12	STUD BOLT	STEEL
13	SPLIT PIN	BRASS
14	DISC LOCK WASHER	BRASS
15	PACKING	NON ASBESTOS
16	GASKET	NON ASBESTOS
17	WASHER	STEEL
18	BASE CONNECTION	BRONZE
19	CAP	BRONZE
20	COUPLING RING	BRONZE
21	SET RING	BRONZE
22	SET SCREW	BRASS
23	CHAIN	STAINLESS WIRE
24	GASKET	RUBBER
25	GASKET	NON ASBESTOS
26	VALVE SEAT	BRONZE



(NAKAJIMA COUPLING) (STORZ COUPLING) (AB COUPLING)
50A to 65A 40A, 50A & 65A Only 65A

FLUID CONDITION & MAX.WORKING PRESSURE (kgf/cm²)

Fluid Condition	Rating	JIS 5K	JIS 10K
	Pulsation Water		5
Non-Shock Water up to 120 °C		7	14

TEST PRESSURE(kgf/cm²)

RATING	JIS 5K	JIS 10K
HYDROSTATIC PRESS TEST(SHELL)	10.5	21
HYDROSTATIC PRESS TEST(SEAT)	7.7	15.4

DIMENSIONS

RATING	SIZE	Ød	ØD	ØC	N-Øh	t	L1	L	H	H1	Weight(kg)	Weight(kg)
JIS 5K (JIS F7333)	50A	50	130	105	4-15	16	105	100	270	240	14.7	12.8
	65A	60	155	130	4-15	22	135	130	310	270	28.2	24.3
JIS 10K (JIS F7333)	50A	50	155	120	4-19	20	110	120	285	255	18.9	17
	65A	60	175	140	4-19	22	135	130	310	270	28.2	24.3

Unit:mm

REMARK: 1. The flanges shall conform to nominal pressure 5K and 10K of JIS B 2210

