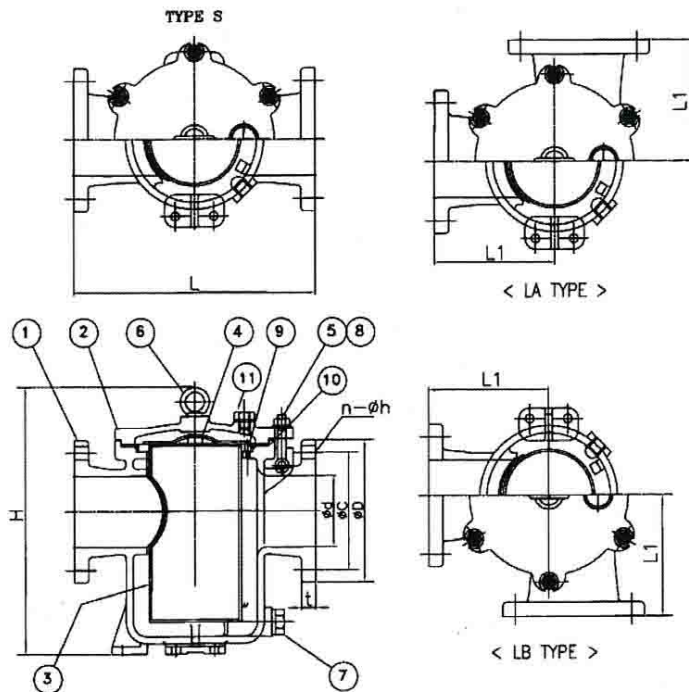


TYPE DESIGNATION

| | | |
|---------|--------------------------|-----------|
| MCI-CWF | JIS 5K CAN WATER FILTER | JIS F7121 |
| MCI-CWF | JIS 10K CAN WATER FILTER | JIS F7121 |



MATERIALS

| NO. | PARTS | MATERIAL |
|-----|-------------------|-----------------------|
| 1 | BODY | CAST IRON |
| 2 | COVER | CAST IRON |
| 3 | STRAINER CYLINDER | STEEL/STAINLESS STEEL |
| 4 | STRAINER HANDLE | STEEL/STAINLESS STEEL |
| 5 | HINGE BOLT | BRASS |
| 6 | EYE BOLT | FORGED STEEL |
| 7 | PLUG | BRASS |
| 8 | PIN | BRASS |
| 9 | NUT | BRASS/STAINLESS STEEL |
| 10 | GASKET | RUBBER |
| 11 | PLUG | BRASS |

TEST PRESSURE(kgf/cm²)

| RATING | JIS 5K | JIS 10K |
|-------------------------------|--------|---------|
| HYDROSTATIC PRESS TEST(SHELL) | 3 | 3 |

DIMENSIONS

Unit:mm

| RATING | SIZE | Ød | ØD | ØC | N-Øh | t | L | L1 | H | Weight(kg) |
|------------------------|------|-----|-----|-------|-------|-----|-----|------|-------|------------|
| JIS 5K (JIS F7121) | 125A | 125 | 235 | 200 | 8-19 | 20 | 400 | 200 | 485 | 62.2 |
| | 150A | 150 | 265 | 230 | 8-19 | 22 | 460 | 230 | 575 | 88.6 |
| | 200A | 200 | 320 | 280 | 8-23 | 24 | 550 | 275 | 665 | 141 |
| | 250A | 250 | 385 | 345 | 12-23 | 26 | 680 | 340 | 825 | 246 |
| | 300A | 300 | 430 | 390 | 12-23 | 28 | 760 | 380 | 920 | 321 |
| | 350A | 335 | 480 | 435 | 12-25 | 30 | 820 | 410 | 1030 | 428 |
| JIS 10K (JIS F7121) | 400A | 380 | 540 | 495 | 16-25 | 30 | 880 | 440 | 1135 | 518 |
| | 125A | 125 | 250 | 210 | 8-23 | 20 | 400 | 200 | 485 | 65.32 |
| | 150A | 150 | 280 | 240 | 8-23 | 22 | 460 | 230 | 575 | 93.03 |
| | 200A | 200 | 330 | 290 | 12-23 | 24 | 550 | 275 | 665 | 148.05 |
| | 250A | 250 | 400 | 355 | 12-25 | 26 | 680 | 340 | 825 | 258.3 |
| | 300A | 300 | 445 | 400 | 16-25 | 28 | 760 | 380 | 920 | 337.05 |
| 350A | 335 | 490 | 445 | 16-25 | 30 | 820 | 410 | 1030 | 449.4 | |
| 400A | 380 | 560 | 510 | 16-27 | 30 | 880 | 440 | 1135 | 544 | |

REMARK: 1.The flanges shall conform to nominal pressure 5K and 10K of JIS B2210
 2.The diameter and pitch of strainer cylinder holes shall be 8mm and 11mm
 3.The total area of filtering holes shall be approximately 4 time or more the area of inlet part after galvanizing