

Cast Iron Air Vent Head



TYPE DESIGNATION

MCI-AVH CAST IRON AIR VENT HEAD VALVE

JISKS91A-121

• dia. 50A to 80 A

KEY WORD FOR OUR AIR VENT HEAD

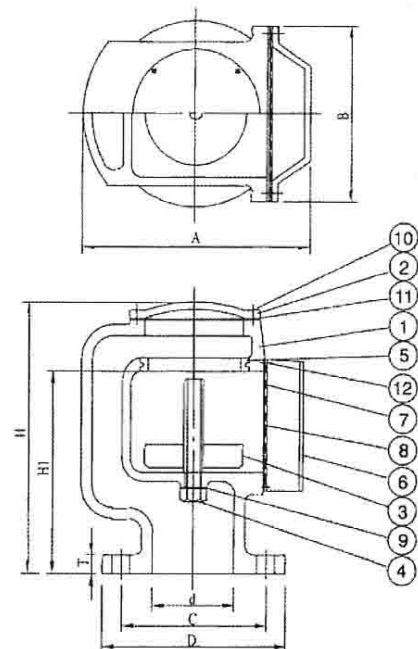
In designing a ventilating system, the designer are to get a straight pipe line as possible, avoiding all other construction which may cause excessive pressure losses. In this regards, the cross sectional areas of out air vent head has been considered so as to be large enough to permit the air to flow at moderate velocities, keeping smaller volume and weight. Out design can contribute much to economy of system operation, abrupt changes in vent size of direction are always to be considered.

ADVANTAGE

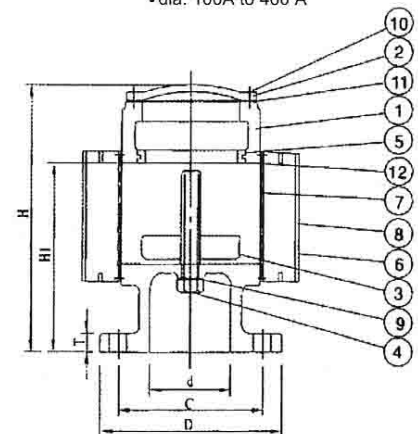
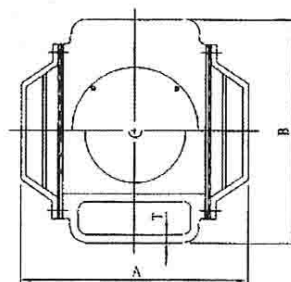
- The testing result of momentary tightness of the disc shows excellent in the worst condition (40 inclining)
- The compact simple figure small area
- Light weight will help easy handling and have the advantage of lighting the ship
- Out disc has been devised not to occur crack or damage in repeated reciprocating motion, it means out AIR VENT HEAD will not bring after service problem in a longer actual seagoing

MATERIALS

NO.	PARTS	MATERIAL
1	BODY	FC/FCD
2	TOP COVER	
3	DISC	
4	GUIDE BAR	SUS 304
5	SEAT PACKING	NBR
6	SCREEN COVER	SS41
7	WIRE NET	SUS304
8	NET FRAME	SS41
9	PACKING	NBR
10	HEX.BOLT	SUS 304
11	PACKING	NBR
12	HEX.BOLT	SUS 304



• dia. 100A to 400 A



DIMENSIONS

Unit:mm

SIZE	50	65	80	100	125	150	200	250	300	350	400
d	50	65	80	100	125	150	200	250	300	350	400
D	130	155	180	200	235	265	320	385	430	480	540
C	105	150	145	165	200	230	280	345	390	435	495
A	171	199	231	242	267	304	386	489	558	630	663
B	131	146	158	256	297	336	444	568	648	739	749
H	183	224	266	231	266	311	367	453	524	595	670
H1	117	141	173	144	171	202	233	291	347	397	475
T	7	7	7	8	8	9	9	9	10	12	12
weight(kg)	10.4	12.5	14.4	18	28	39	74	105	146	199	276



reserves the right to make changes in design, materials or specifications without prior notice and free of obligation to furnish or install such changes on products previously sold.

MARINE VALVES JIS SERIES