

# Cast Bronze Marine Valves

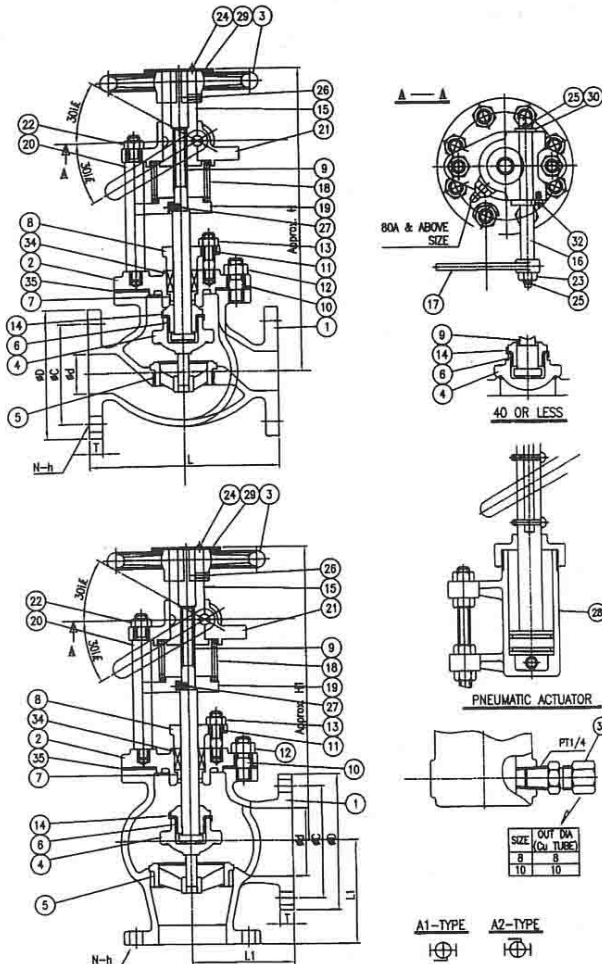


## TYPE DESIGNATION

MBC-ESV

FUEL OIL TANK EMERGENCY SHUT-OFF VALVES

JIS F7399



## MATERIALS

NO.	PARTS	MATERIAL
1	BODY	BRONZE
2	BONNET	BRONZE
3	HANDWHEEL	CAST IRON
4	DISC	STAINLESS STEEL
5	BODY SEAT RING	STAINLESS STEEL
6	DISC NUT	BRASS
7	BONNET BUSH	BRASS
8	PACKING GLAND	BRONZE
9	STEM	STAINLESS STEEL
10	BONNET BOLT	STEEL
11	PACKING BOLT	STEEL
12	BONNET NUT	STEEL
13	PACKING NUT	BRASS
14	DISC WASHER	STAINLESS STEEL
15	STEM BUSH	BRASS
16	SPINDLE	STAINLESS STEEL
17	LEVER	STEEL
18	SPRING	SUP4
19	SPRING SUPPORT	BRONZE/STEEL
20	STAY	STEEL
21	SUPPORT BUSH	BRONZE/STEEL
22	STAY NUT	STEEL
23	NUT	STEEL
24	MACHINE SCREW	BRASS
25	SPLIT PIN	BRASS
26	MACHINE SCREW	BRASS
27	LOCK PIN	STEEL
28	PNEUMATIC CYLINDER	BRONZE/STEEL
29	NAME PLATE	BRASS
30	WASHER	STEEL
32	SET SCREW	STEEL
33	NIPPLE	BRASS
34	PACKING	NON ASBESTOS
35	BONNET GASKET	NON ASBESTOS

## TEST PRESSURE(kgf/cm<sup>2</sup>)

RATING	JIS 10K
HYDROSTATIC PRESS TEST (SHELL)	7
HYDROSTATIC PRESS TEST (SEAT)	2

## DIMENSIONS

Unit:mm

RATING	SIZE	Ød	ØD	ØC	N-Øh	t	L	L1	H	H1	Weight ( Kg )	
JIS 10K (JIS F7399)	25A	25	125	90	4-19	14	130	85	130	265	8.5	8.5
	40A	40	140	105	4-19	16	170	100	165	310	12.7	12.7

REMARK: The flanges of nominal diameter 40 or less shall conform to JIS B 2240 -10k and the flanges of nominal diameter 50 or more shall conform to JIS B 2210 -10K. However they may conform to JIS B2240-5k or JIS B2210-5k



reserves the right to make changes in design, materials or specifications without prior notice and free of obligation to furnish or install such changes on products previously sold.

MARINE VALVES JIS SERIES

11