

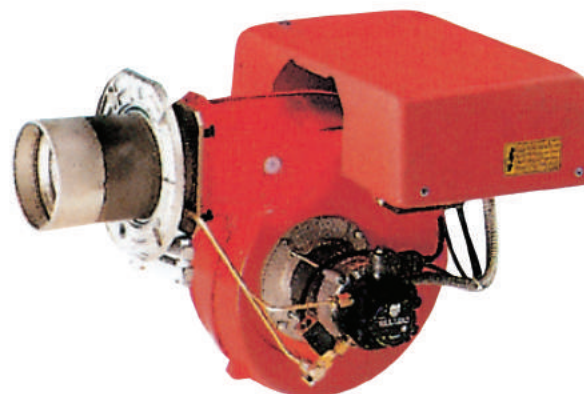
PRESS GV SERIES

The PRESS G series of burners covers a firing range from 140 to 356 kW and they have been designed for use in civil installations of small dimensions or in industrial applications, like incinerators or dryer kilns. Operation is "One stage"; the burners are fitted with a microprocessor-based burner safety control box which supplies indication of operation and diagnosis of fault cause. The combustion head, that can be set on the basis of required output, allows optimal performance ensuring good combustion and reducing fuel consumption. The main feature of these burners is their reliability due to a simple and strong construction, which permits operation without particular maintenance intervention. Simplified maintenance is achieved by the slide bar system, which allows easy access to all of the essential components of the combustion head. All electrical components are easily accessible only by dismounting a protection panel, thus guaranteeing a quick and simple intervention on components.

Guidelines for installation of burners in conformity to EU Regulation:

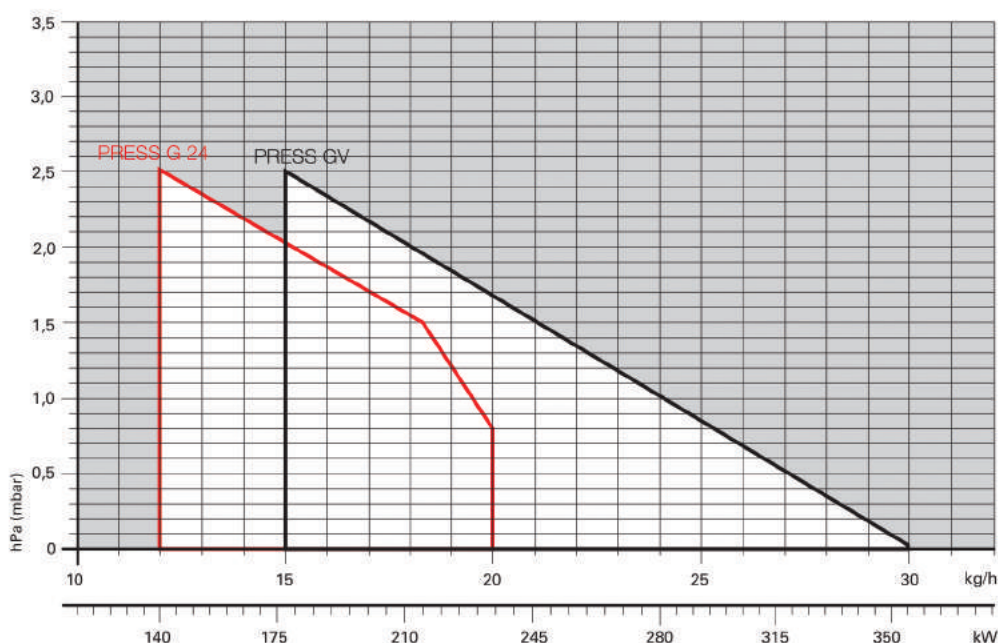
A RIELLO burner (Heat Generator), where it is matched with a water-based boiler (Heater Housing) with a nominal output ≤ 400 kW, providing heat for heating purposes and heat to deliver sanitary hot water, can be installed:

- With boilers (heater housings) already in service in the field, for replacement of identical products, in conformity to Article 1, paragraph 2, point (G) of the EU Regulation No. 813/2013;
- With boilers (heater housings) on a new installation, if they have emissions complying with the requirement of Annex II, paragraph 4 of the EU regulation No. 813/2013.



| | |
|-----------|--------------|
| PRESS G24 | 140 ÷ 237 kW |
| PRESS GV | 178 ÷ 356 kW |

FIRING RATES



Useful working field for choosing the burner

Test conditions conforming to EN267
 Temperature: 20°C
 Pressure: 1013,5 mbar
 Altitude: 0 m a.s.l.

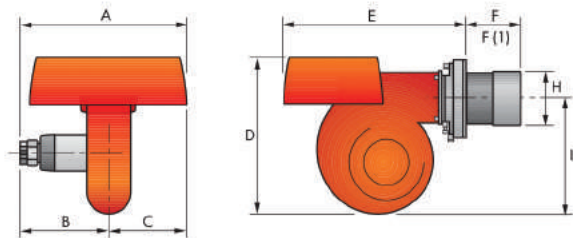
One Stage Light Oil Burners

PRESS GV SERIES

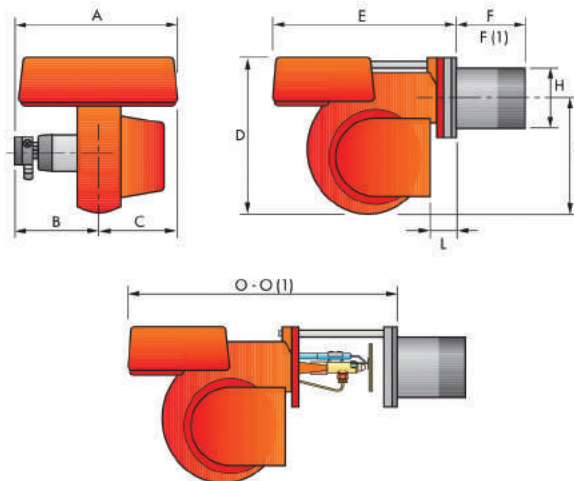
Overall dimensions (mm)

BURNER

PRESS G24



PRESS GV

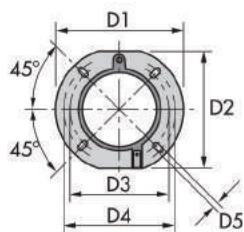


| MODEL | A | B | C | D | E | F - F (1) | H | I | L | O - O (1) |
|-------------|-----|-----|-----|-----|-----|-----------|-----|-----|----|-----------|
| ► PRESS G24 | 425 | 222 | 203 | 397 | 485 | 118 - 253 | 125 | 290 | - | - - - |
| ► PRESS GV | 439 | 234 | 205 | 397 | 473 | 185 - 320 | 140 | 292 | 59 | 690 - 825 |

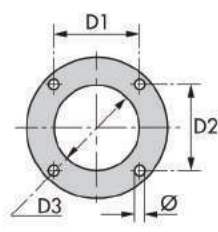
(1) Length with extended combustion head.

BURNER - BOILER MOUNTING FLANGE

PRESS G24

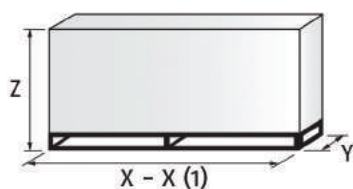


PRESS GV



| MODEL | D1 | D2 | D3 | D4 | D5 | Ø |
|-----------|-----|-----|-----|-----|----|-----|
| PRESS G24 | 213 | 198 | 160 | 190 | 11 | - |
| PRESS GV | 160 | 160 | 170 | - | - | M10 |

PACKAGING



| MODEL | X - X (1) | Y | Z | kg |
|-------------|-----------|-----|-----|----|
| ► PRESS G24 | 650 | 535 | 450 | 33 |
| ► PRESS GV | 680 | 535 | 450 | 33 |

(1) Length with extended combustion head.

One Stage Light Oil Burners

PRESS GV SERIES

RIELLO

Specification

DESIGNATION OF SERIES

LIGHT OIL

| | | | | | | |
|----------------------|-----|--|----|--|----------|--------|
| Series : PRESS | | | | | | |
| | | Operation : GV or G24 | | One stage | | |
| | | GW or 1-2-3-4G | | Two stage | | |
| | | Emission : ... | | Class 1 EN267 | | |
| | | Head : TC | | Standard head | | |
| | | TL | | Extended head | | |
| | | Flame control system : FS1 | | Standard (1 stop every 24 h) | | |
| | | FS2 | | Continuous working (1 stop every 72 h) | | |
| | | Electrical supply to the system : 1/230/50 | | 1/230V/50Hz | | |
| | | 1/210/60 | | 1/210V/60Hz | | |
| | | 1/220/60 | | 1/220V/60Hz | | |
| | | 1/200/50-60 | | 1/200V/50-60Hz | | |
| | | 3/230-400/50 | | 3/230V/50Hz - 3N/400V/50Hz | | |
| | | 3/210/60 | | 3/210V/60Hz | | |
| | | 3/220-380/60 | | 3/220V/60Hz - 3N/380V/60Hz | | |
| | | 3/200/50-60 | | 3/200V/50-60Hz | | |
| | | Auxiliary voltage : 230/50 | | 230V/50Hz | | |
| | | 120/60 | | 120V/60Hz | | |
| | | 220/60 | | 220V/60Hz | | |
| | | 200/50-60 | | 200V/50-60Hz | | |
| | | | | | | |
| PRESS | G24 | | TC | FS1 | 1/230/50 | 230/50 |
| BASIC DESIGNATION | | | | | | |
| EXTENDED DESIGNATION | | | | | | |

One Stage Light Oil Burners

PRESS GV SERIES

Specification

STATE OF SUPPLY

Monoblock forced draught oil burner with one stage operation, fully automatic, made up of:

- Air suction circuit
- Fan with forward curve blades with high performance concerning pressure and air delivery
- Air damper for air setting
- Starting motor at 2850 rpm, single-phase, 230V, 50Hz
- Combustion head, that can be set on the basis of required output, fitted with:
 - stainless steel end cone, resistant to corrosion and high temperatures
 - ignition electrodes
 - flame stability disk
- Gears pump for high pressure fuel supply, fitted with:
 - filter
 - pressure regulator
 - connections for installing a pressure gauge and vacuumeter
 - internal by-pass for single pipe installation
- Oil valves on the output circuit
- Photocell for flame detection
- Microprocessor-based burner safety control box, with diagnostic function
- Slide bars for easier installation and maintenance (for GV model)
- Protection filter against radio interference
- IP 44 electric protection level.

Standard equipment:

- 2 flexible pipes for connection to the oil supply network
- 2 gaskets for the flexible pipes
- 2 nipples for connection to the pump
- 2 Pipe fittings (for GV model)
- 2 Pipe fittings gasket (for GV model)
- 1 burner flange (for G24 model)
- 4 screws for fixing the burner flange to the boiler
- 1 thermal screen
- Instruction handbook for installation, use and maintenance
- Spare parts catalogue.

Available models

| CODE | MODEL | | | | | HEAT OUTPUT | | TOTAL ELECTRICAL POWER (kW) | NOTE |
|----------|-----------|----|-----|----------|--------|-------------|--------|--------------------------------|------|
| | | | | | | (kW) | (kg/h) | | |
| 20096861 | PRESS G24 | TC | FS1 | 1/230/50 | 230/50 | 140/237 | 12/20 | 0,4 | (1) |
| 3473620 | PRESS GV | TC | FS1 | 1/230/50 | 230/50 | 178/356 | 15/30 | 0,43 | (1) |
| 3808058 | PRESS GV | TC | FS1 | 1/220/60 | 220/60 | 178/356 | 15/30 | 0,43 | (1) |

Net calorific value: 11,8 kWh/kg – 10200 kcal/kg – Viscosity at 20°C 4–6 mm²/s (cSt)

The burners of PRESS series are in according to 2014/30/EU – 2014/35/EU – 2006/42 EC Directive and EN 267.

(1) Burner needs 1 nozzle (to order separately).

Burner accessories

Nozzles type 60°B

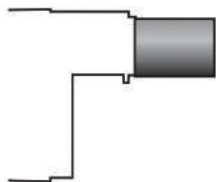


The nozzles must be ordered separately. The following table shows the features and codes on the basis of the maximum required fuel output.

NOTE : for nozzles quantity to order see note in the "Available Burner Models" table.

| BURNER | RATED DELIVERY [kg/h] at 12 bar | GPH | NOZZLE CODE |
|-------------|------------------------------------|------|----------------|
| ► PRESS G24 | 6,3 | 1,50 | 3042107 |
| ► PRESS G24 | 7,3 | 1,75 | 3042110 |
| ► PRESS G24 | 8,5 | 2,00 | 3042126 |
| ► PRESS G24 | 10,6 | 2,50 | 3042140 |
| ► PRESS G24 | 12,7 | 3,00 | 3042158 |
| ► PRESS G24 | 14,8 | 3,50 | 3042162 |
| ► PRESS GV | 17 | 4,00 | 3042172 |
| ► PRESS GV | 19,1 | 4,50 | 3042182 |
| ► PRESS GV | 21,2 | 5,00 | 3042192 |
| ► PRESS GV | 23,3 | 5,50 | 3042202 |
| ► PRESS GV | 25,5 | 6,00 | 3042212 |
| ► PRESS GV | 27,6 | 6,50 | 3042222 |
| ► PRESS GV | 29,7 | 7,00 | 3042232 |
| ► PRESS GV | 31,8 | 7,50 | 3042242 |

Extended head kit



"Standard head" burners can be transformed into "extended head" versions, by using the special kit.

| BURNER | STANDARD HEAD LENGTH (mm) | EXTENDED HEAD LENGTH (mm) | KIT CODE |
|------------|------------------------------|------------------------------|----------|
| ► PRESS GV | 185 | 320 | 3000580 |

Spacer kit



If burner head penetration into the combustion chamber needs reducing, varying thickness spacers are available, as given in the following list.

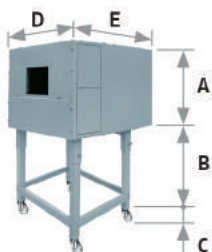
| BURNER | SPACER THICKNESS S (mm) | KIT CODE |
|------------|----------------------------|----------|
| ► PRESS GV | 142 | 3000755 |

One Stage Light Oil Burners

PRESS GV SERIES

Burner accessories

Sound proofing box



If noise emission needs reducing even further, sound-proofing boxes are available. When a lower "B" dimension is required, it is available the Box Support Kit code 20065135 which allows to reduce it at the fixed dimension of 55 mm. The sound-proofing boxes are not suitable for outdoor use.

| BURNER | BOX TYPE | A (mm) | B (mm) min-max | C (mm) | D (mm) | E (mm) | [dB(A)] (*) | BOX CODE |
|------------|----------|--------|----------------|--------|--------|--------|-------------|----------|
| ► PRESS GV | C1/3 | 650 | 372 - 980 | 110 | 690 | 770 | 10 | 3010403 |

(*) Average noise reduction according to EN 15036-1 standard

Degasing unit



To solve problem of air in the oil sucked, two versions of degasing unit are available.

| BURNER | FILTER | FILTERING DEGREE (μm) | DEGASING UNIT CODE |
|------------|-------------|-----------------------|--------------------|
| ► PRESS GV | With filter | 50 - 75 | 3010055 |

PC Interface kit



To connect the control box to a personal computer for the transmission of operation, fault signals and detailed service information, an interface adapter with PC software are available.

| BURNER | KIT CODE |
|------------------|----------|
| ► PRESS G24 - GV | 3002719 |

Protection kit (electromagnetic interferences)

When the burner is installed in a room particularly subject to electromagnetic interference (signals emitted over 10 V/m) due for example to INVERTER presence or in systems where the lengths of the thermostat connections is over 20 meters, this specific protection kit is available as an interface between the thermostatic controls and the burner.

| BURNER | KIT CODE |
|--------------|----------|
| ► All models | 3010386 |