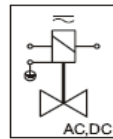
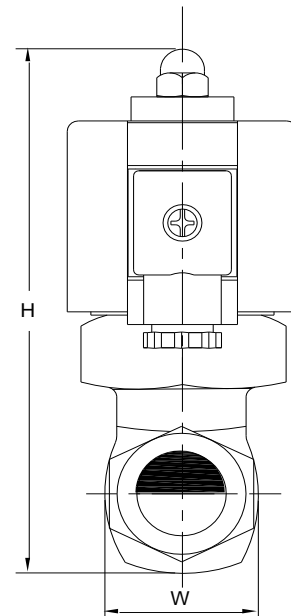
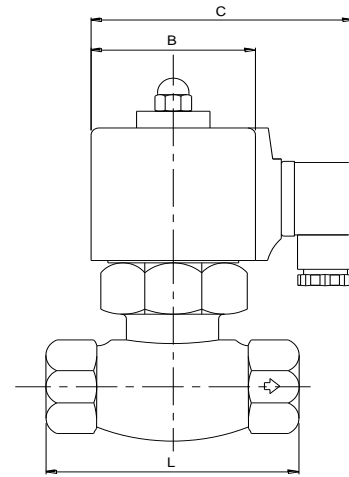


Pilot Operated Type, 2/2 Way, Piston Design, Normally Closed



DIMENSION



Application:

Water, Air, Hot water, Steam, etc.

Function:

Valve de-energised closed by spring power normally closed (NC)
 When energized, the pressure decomposes the secondary side of the piston, then the pressure differential lift the piston from the seat.
 A pressure differential is necessary for proper operation.

Specification:

Body material	: Brass
Sealing material	: PTFE
Pressure range	: 1~15 bar
Fluid temperature	: 5 ~ 80 °C
Ambient temperature	: 50°C
Enclosure	: DIN coil IP65 ; Option : Lead wire IP54
Voltage available	
AC	: 110, 240V, 50Hz
DC	: 24V
Tolerance	: ±10% (AC), ±5% (DC)
Power Consumption	:
AC	: 28VA
DC	: 30 Watts

Unsuitable Fluid:

- Corrosive Fluid, viscosity degree too high, over 50 cst.
- Liquid when be heating, solid when cool.
- Please do not install in high frequent operations.

Caution :

- Please clean up the inside of pipes before fitted.
- To install a strainer or filter in front of the solenoid valve.
- Up right installation is best for long life.

Model	Size	Orifice (mm)	Pressure		L	H	W	B	C
			Min.	Max					
AL-15	1/2"	17	1	15	83	148	41.5	63	97.5
AL-20	3/4"	17	1	15	83	148	41.5	63	97.5
AL-25	1"	25	1	15	95	160	52.5	63	97.5
AL-32	1 1/4"	30	1	15	110	178	70	63	97.5
AL-40	1 1/2"	30	1	15	110	178	70	63	97.5
AL-50	2"	50	1	15	165	223	88.5	63	97.5

* Data subject to alteration