



UNIMECH GROUP, MALAYSIA



A MEMBER OF UNIMECH GROUP, MALAYSIA

BALL VALVE FLANGED END JIS 10K



Arita full bore ball valve design offers a smooth and turbulence-free flow of media. The stainless steel ball is housed in a rigid and rugged two pieces cast iron body. The PTFE seats are precisely machined and hold the ball firmly in the housing and at the same time provides excellent sealing. A blown-out proof stainless steel stem is used to open or shut the valve. This operation can be done manually with a lever or gear, electric actuator, or pneumatic actuator. The adjustable packing gland provides good sealing between the stem and housing. These valves are suitable to use for cold water, hot water, steam, gas and oil media.

©2022 Arita Valve ARV-800FE

08/23

ARITA is a registered trade mark of Unimech Group, Malaysia.

Technical Data

Dimensions in mm (JIS 10K)

SIZES		BORE DIAMETER	L	H	D	CV	TORQUE (N.m ²)	WT KG
DN	In.							
15	1/2	15	108	80	140	26	5	2.0
20	3/4	20	117	90	140	50	8	2.5
25	1	25	127	95	135	94	9	4.5
32	1 1/4	32	140	102	135	160	10	5.5
40	1 1/2	40	165	110	210	260	10	6.5
50	2	50	178	130	210	480	13	9.0
65	2 1/2	65	190	162	340	750	20	13.0
80	3	80	203	177	340	1300	32	16.0
100	4	100	229	205	340	2300	48	22.0
125	5	125	300	240	670	3000	80	43.0
150	6	150	340	280	670	5400	200	54.5
200	8	200	457	325	670	10000	350	91.5
250	10	250	533	660		16000	450	174.0
300	12	300	610	750		24000	650	297.0

Note : Cv = US Gallon per minutes
Size DN125 ~ DN300, L=Basic Series ISO 12

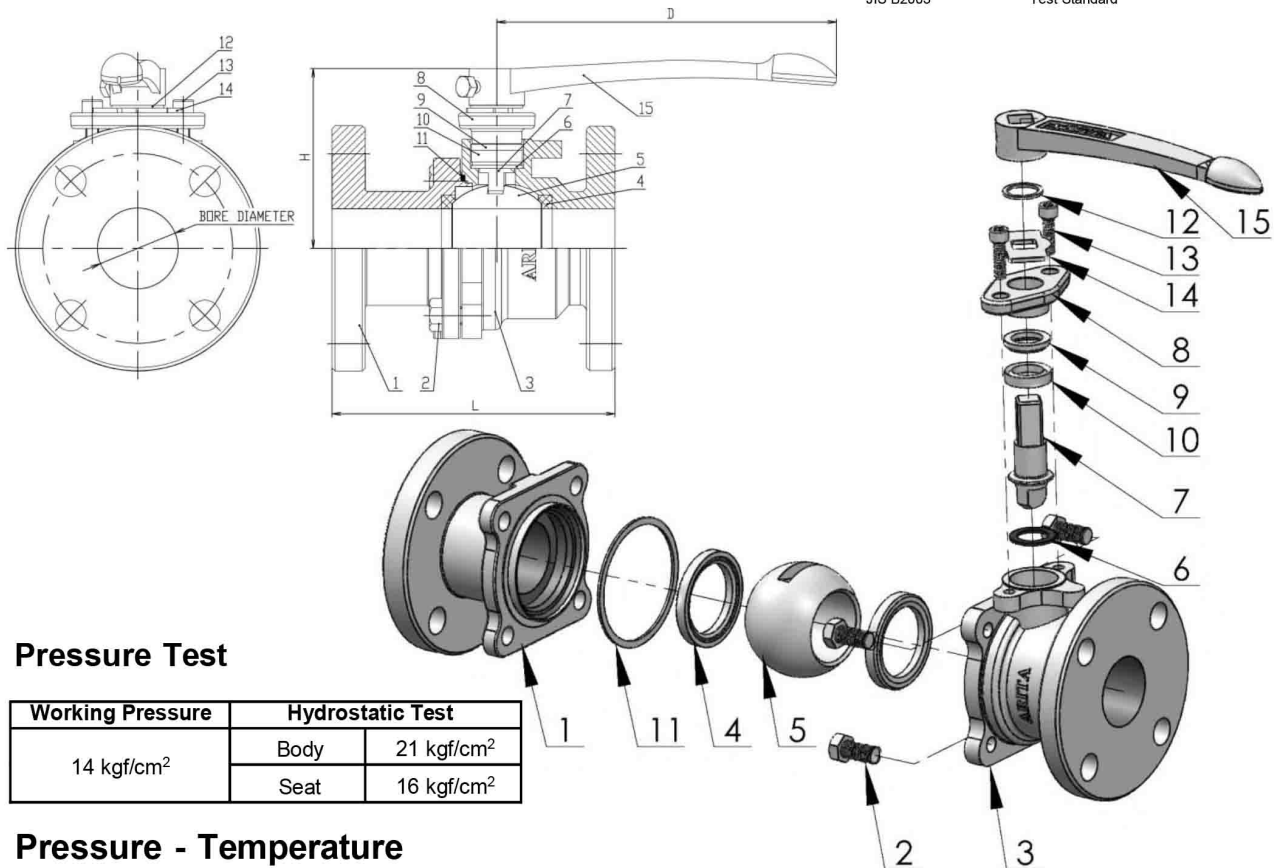
Materials

No.	PART	QTY.	MATERIAL
1	CAP	1	FC 200
2	BOLT	3-16	MILD STEEL
3	BODY	1	FC 200
4	BALL SEAT	2	PTFE
5	BALL	1	SUS 304
6	THRUST WASHER	1	PTFE
7	STEM	1	SUS 304 / SUS 410
8	GLAND	1	FC 200
9	TOP PACKING	1	PTFE
10	BOTTOM PACKING	1	PTFE
11	GASKET	1	PTFE
12	RETAINER RING	1	SPRING STEEL
13	CAP SCREW	2	MILD STEEL
14	STOPPER	1	MILD STEEL
15	HANDLE	1	FC 200

Design Standard:

JIS B2210
JIS B2002
JIS B2003

Flanged Ends
Face to Face Distance
Test Standard



Pressure Test

Working Pressure	Hydrostatic Test	
14 kgf/cm ²	Body	21 kgf/cm ²
	Seat	16 kgf/cm ²

Pressure - Temperature

Temperature °C	-10 ~ 120	150	180	200
Pressure Mpa (kgf/cm ²)	0.98 (10.0)	0.88 (9.0)	0.83 (8.5)	0.78 (8.0)

* Note: For working temperature above 120°C, reinforced PTFE or carbon filled PTFE seat is recommended

* For non-shock water, at 120°C, the allowable pressure is 1.37 Mpa (14 kgf/cm²)

The contents of this literature are for informative purposes only.

Arita is not responsible for suitability or compatibility of these products in relation to system requirement. For specific requirements, consult Arita or its distributors. Arita reserves the right to change or modify product design without prior notice.



©2022 Arita Valve ARV-800FE (J) 07/22

A MEMBER OF UNIMECH GROUP, MALAYSIA

ARITA is a registered trade mark of Unimech Group, Malaysia.