

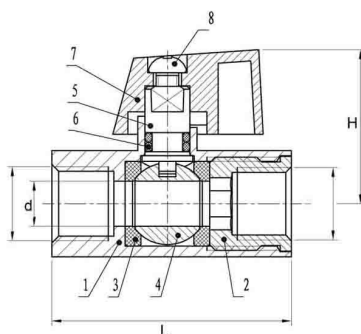


UNIMECH GROUP, MALAYSIA

MINI BALL VALVE SCREWED END

Technical Data

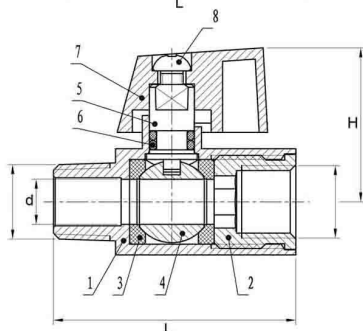
Female to Female (F/F)



Dimension in mm (F/F)

DN		L	d	H	Wt. (g)
8	1/4"	42.5	8	27.8	80
10	3/8"	40.5	8	27.8	80
15	1/2"	46	10	30.3	100

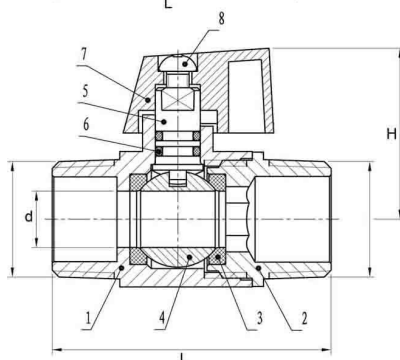
Male to Female (M/F)



Dimension in mm (M/F)

DN		L	d	H	Wt. (g)
8	1/4"	43	8	27.8	80
10	3/8"	43	8	27.8	80
15	1/2"	46	10	30.3	100

Male to Male (M/M)



Dimension in mm (M/M)

DN		L	d	H	Wt. (g)
8	1/4"	45	8	27.8	70
10	3/8"	45	8	27.8	70
15	1/2"	49.5	10	30.3	110

Features :

- Material : Brass (Chromed Plated)
- Pipe Thread in accordance : BSPT
- Working Pressure : 200 PSI
- Reduce Port
- Investment Casting Body
- Blow-out Proof Stem

Material

No	PART	MATERIAL
1	BODY	BRASS (Chromed Plated)
2	CAP	BRASS
3	SEAT	PTFE
4	BALL	BRASS
5	STEM	BRASS
6	O-RING	NBR
7	HANDLE	ALUMINIUM
8	SCREW	STEEL

The contents of this literature are for informative purposes only. Unimech is not responsible for suitability or compatibility of these products in relation to system requirement. For specific requirements, consult Unimech or its distributors. Unimech reserves the right to change or modify product design without prior notice.