

UNIMECH GROUP, MALAYSIA



A MEMBER OF UNIMECH GROUP, MALAYSIA

DUCTILE IRON GLOBE VALVE SCREWED END

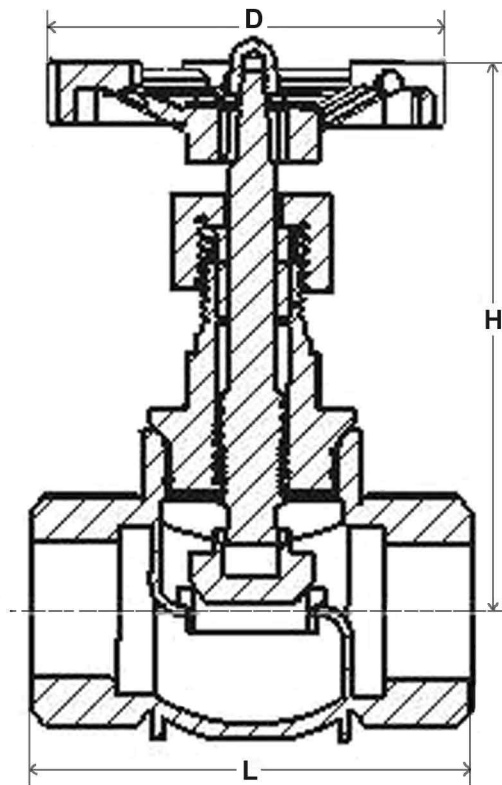


The body and bonnet of globe valves are casted from ductile iron. This provides the valves with superior physical and chemical properties over cast iron in tensile strength, shock, vibration, and corrosion. The stainless steel stem with trapezoidal thread allows it to withstand higher load and longer service life. The seat and disc are made of stainless steel with fine finished surfaces and they are self aligned to give a long leak free service.

Dimension in mm (Screwed End)

SIZES		Bore	L	H	D	Cv	Torque	WT.
DN	in.	Diameter						(KG)
15	1/2	15	65	93	71	20	5	0.55
20	3/4	20	80	102	71	40	8	0.77
25	1	25	90	121	86	66	9	1.16
32	1.1/4	32	105	130	86	120	10	1.89
40	1.1/2	40	120	148	127	195	10	2.85
50	2	50	140	169	127	310	13	4.22

Note : Cv = US Gallon per minutes



Pressure Test

Hydrostatic Test		Pneumatic
Body	21 kgf/cm ²	N/A
Seat	16 kgf/cm ²	6 kgf/cm ²

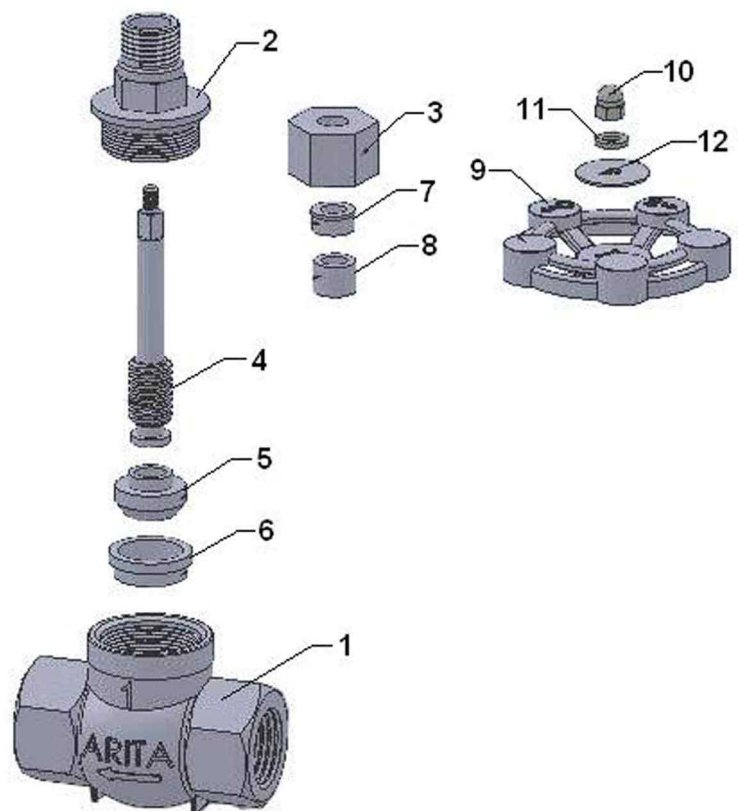
Working Pressure

Steam, Oil, at 220°C or below	10 kgf/cm ²
Water Non-Shock at 120°C or below	14 kgf/cm ²

Technical Data

Material

No.	PART	QTY.	MATERIAL
1	BODY	1	FCD 400
2	BONNET	1	FCD 400
3	PACKING NUT	1	FCD 400
4	STEM	1	SUS 416
5	DISC	1	SUS 416
6	BODY SEAT RING	1	SUS 416
7	GLAND	1	SUS 416
8	GLAND PACKING	1	GRAPHITE
9	HANDWHEEL	1	FC 200
10	CAP NUT	1	GALVANIZED IRON
11	WASHER	1	MILD STEEL
12	NAME PLATE	1	ALUMINIUM



Design Standard:

JIS B2051
JIS B2003

Face to Face Distance
Test Standard

